

# 600型

## 裘皮縫紉機

### FUR SEWING MACHINE

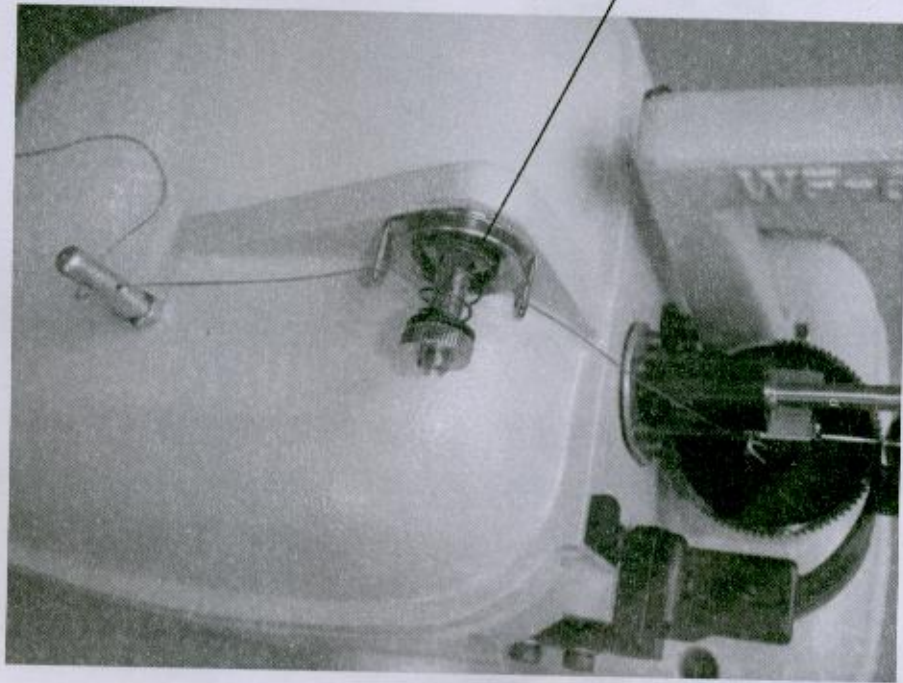
SUN SPECIAL

GS-600-30

\* CABESA (AVADO) (KUCAS)

### 使用説明 / 零件様本

4-1



请看穿线图表1。从棉线柱头螺栓的线轴上取出线，把线穿过导纱钩柱头螺栓（图号4-1）把线拉紧从导纱钩的第一个孔通过，线向前进越过图盘，穿过第二个孔，往下并穿过紧针线板（图号8-7）中的孔。现在传动机器的滑轮直到针杆拉紧插棒式住塞（图号8-2）张开。然后打开前面的进纱盘，线从针的下面和针杆之下的背面进入紧线板的孔，针是通过孔伸出的。此刻，从下侧，线通地过针眼向上穿过。

#### Threading the Machine

See threading chart fig 1. Take thread from spool on cotton stud, through thread guide stud No.4-1 and thread tension guide of first hole, forward and over between the tension discs through of second hole, down and through the hole in the needle bar tension plate No.8-7

Now turn the machine pulley until the needle bar tension plunger No.8-2 opens, and open front feed disc, pass thread under the needle and back under the needle bar into thread slot in the needle bar tension plate.

Loop thread over tension plunger No.8-2 draw forward, close up under the needle bar and into the hole in the tension plate through which the needle protrudes.

Now, from the underside, pass the thread up through the needle eye.

#### 针线的松紧

针线的松紧调节是通过拧动在纱线拉紧器左边的螺母（图号：4-1）来进行的。

要拉紧纱线，可朝你本人方向（顺时针方向）旋动螺母；要放松纱线，可朝离开你本人方向（逆时针方向）拧动螺母。

#### Thread Tension:

The tension on the needle thread is regulating by turning thread unt No.4-1 at the left of thread tension.

To increase thread tension, turn the tension unt toward you (clockwise).

To decrease the tension, turn the tension unt away from you (counter clockwise).



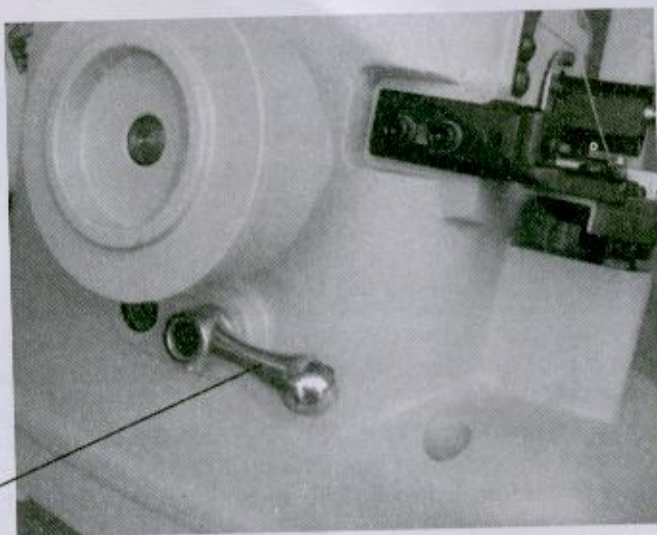
16-9

#### 调节进纱盘的挤压力

增加进纱盘的挤压力可以向右边旋转压力控制杆调节螺钉（图号16-9），减低进纱盘挤压力可以向左边旋转压力控制杆调节螺钉。

#### Regulating the Pressure of the Feed Discs:

The Pressure between the feed discs may be increase by turning pressure lever adjusting screw No.16-9 to the right,or decreased by turning this screw to left.



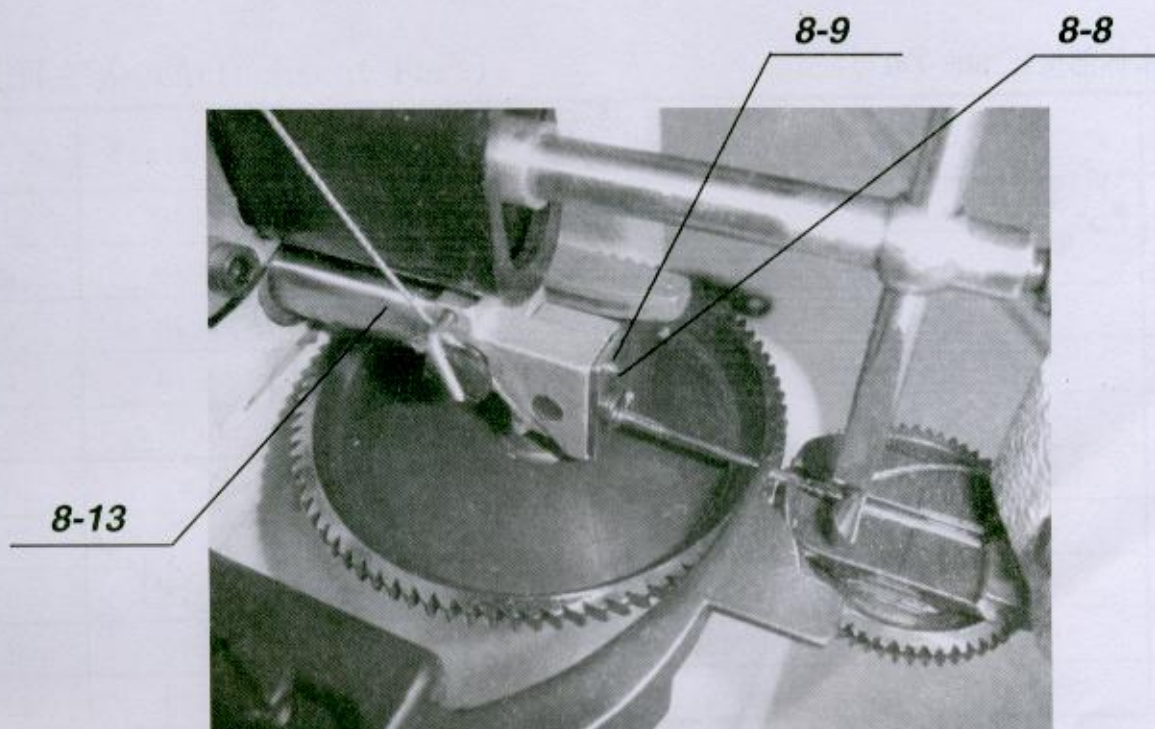
14-14

#### 变换针目距离长度

压下机器左侧的手柄（图号：14-14）用右手顺时针转动皮带轮听到长喀声既已定位，继续转动皮带轮调至所需要的针距长度，如调整过大在逆时针转动皮带轮。如此反复，调至所需的针目长度，放开手柄（图号：14-14）方可开机工作。

#### Chaning the Stitch Length:

Pressing the handle(No.14-14) on the left side of the machine.Tureing the pulley clockwise your right hand,when heard"kacha"sound means the positioning is ok.Continue rotatiing the pulley and adjust it to the stitch length that you need.Rotating the pulley counterclockwise if adjusted too much,and repeatedly adjust to the stitch length that you need.Release the handle(No.14-14) and then you can starting up to work.



### 换 针

转动皮带轮直到活套旋转到不挡道的位置，然后打开进纱盘。

用镊子夹住针并使无针的针槽向上，把针放入针杆针槽中的夹钳（图号8-8）和夹紧，然后尽力地把针往后面推进直到推不动为止。

### Replacing the Needle

Turn the belt wheel until the looper swings out of the way and open the feed discs.

With tweezers, hold the needle with short groove up, place it into the needle groove in the needle bar slot where the needle clamp No.8-8 hold it and push it back as far as it will go.

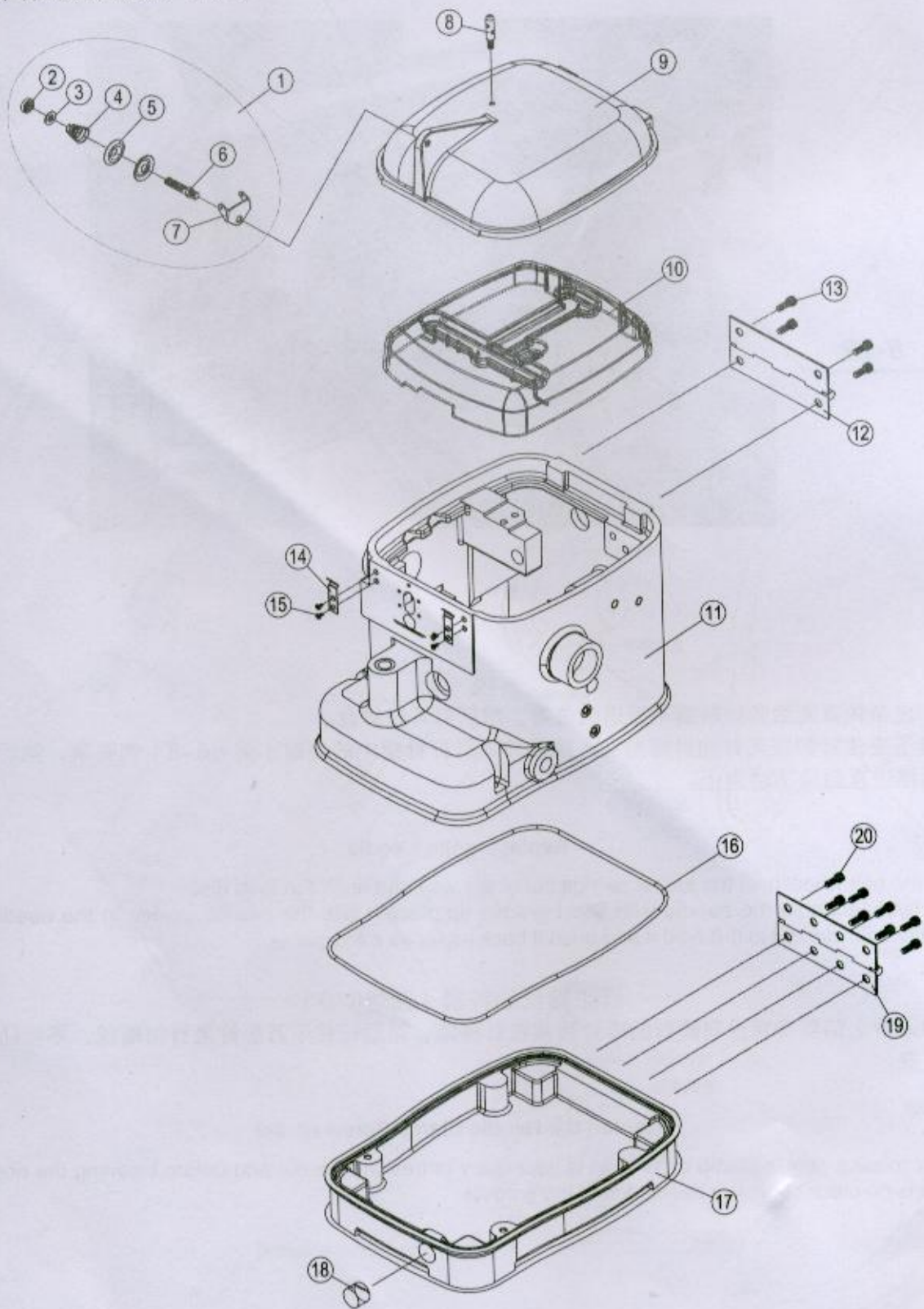
### 针钳螺丝的拧紧（图号8-9）

在放入针之前要确定没有断针的碎片残留在针槽内，然后记住千万要拧紧针钳螺丝，不要让针可以从槽中脱落下来。

### Tighten the Needle Clamp Screw no.8-9

Never release needle clamp more than is necessary to free the needle and before inserting the needle, make sure there is no piece of broken needle left in the groove.

A. 本体部份 (Frame Part):



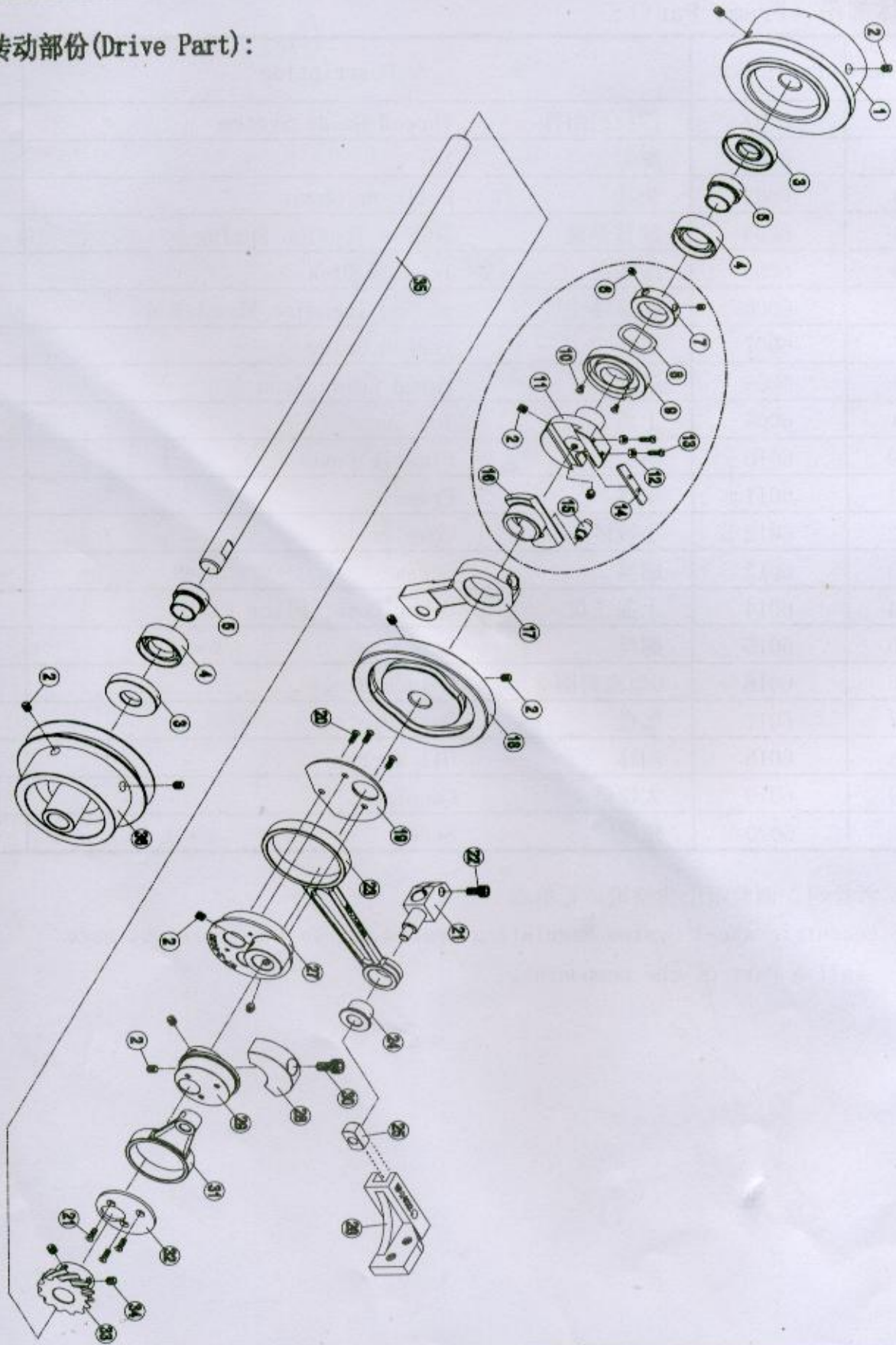
A本体部份 (Frame Part):

Ref.No.	Parts No.	Description	WF-600
1	6001	沙拉组组件 Thread Guide System	1
2	6002	螺帽 Nut	1
3	6003	垫片 Follower Sheet	1
4	6004	调整弹簧 Thread Tension Spring	1
5	6005	压线盘 Tension Disk	2
6	6006	调整线轮杆 Thread Thension Wheel Rod	1
7	6007	线挂 Thread Guide	1
8	6008	送线杆 Thred Guide Stud	1
9	6009	上盖 Top Cop	1
10	6010	塑胶盖 Plastic Cover	1
11	6011	本体 Frame	1
12	6012	小铰链 Coupler	1
13	6013	螺丝 Screw M6*8	4
14	6014	上盖飞盘 Upper Cover Flicr Plate	2
15	6015	螺丝 Screw M5*6	4
16	6016	O型密封圈 O-type Ring	1
17	6017	底盘 Base Plate	1
18	6018	油标 Oil Marror	1
19	6019	大铰链 Coupler	1
20	6020	螺丝 Screw M8*12	8

P. S. 沙拉组, 调整组出售整组, 无单卖

P. S. Eccentric wheel System, Regulating System are sell all, are not have  
sell a Part of the component.

B. 传动部份(Drive Part):



B传动部份(Drive Part):

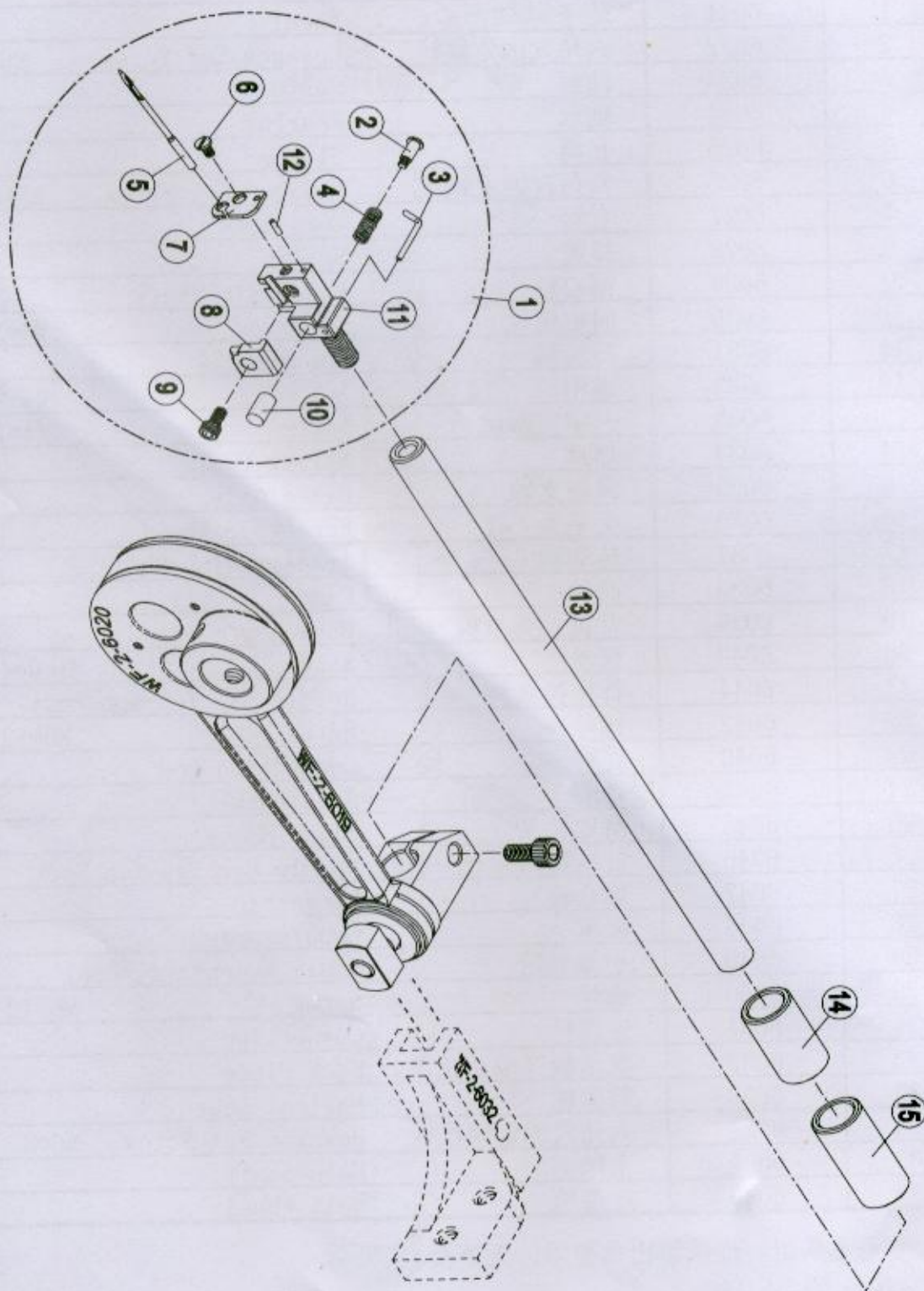
Ref.No	Parts No.	Description	WF-600
1	6021	轮子 Wheel	1
2	6022	六角穴因定螺丝 Hexagon Set Screw M6*10	2
3	6023	油封 Seald	1
4	6024	轴承 Bearing	2
5	6025	套筒 Sleeve	2
6	6026	六角穴因定螺丝 Hexagon Set Screw M5*6	2
7	6027	套管 Core Tube	1
8	6028	弹簧 Spring	1
9	6029	偏心轴 Eccentric Shaft	1
10	6030	固定螺丝 SetScrew M4*3.8	2
11	6031	凸轮轴 Cam Shaft	1
12	6032	螺帽 Nut M4	2
13	6033	一字穴螺丝 Screw M4*11	2
14	6034	弹片 Spring Plafe	1
15	6035	固定支轴 Fixed Axle	1
16	6036	毛毛头 Eccentric Wheel	1
17	6037	传动轴 Transmission Shaft	1
18	6038	凸轮 Cam	1
19	6039	背盘、支承板 Back Plate	1
20	6040	螺丝 Screw M1/8*44	3
21	6041	针棒拉紧柱 Needle Bar Tension Post	1
22	6042	螺丝 Screw M5*12	1
23	6043	连杆 Connection Rod	1
24	6044	轴套 Axie Bush	1
25	6045	滑块 Slide Block	1
26	6046	针棒拉紧座(小滑槽) Needle Bar Tension Seat	1
27	6047	偏心轮 Eccentric	1
28	6048	配重 Counterweight	1
29	6049	小偏心轮 Small Eccentric Wheel	1
30	6050	螺丝 Screw M6*12	1
31	6051	连接杆 Connection	1
32	6052	支承板(偏心轮盖) Back Plate	1
33	6053	斜齿轮 Helical Gear	1
34	6054	六角穴因定螺丝 Hexagon Set Screw M6*8	2
35	6055	主轴 Main Shaft	1
36	6056	皮带轮 Belt Wheel	1

P. S. 毛毛头组, 连接组出售整组, 无单卖。

P. S. Eccentric wheel System, Connection system are sell all, are not have sell a Part of the component



C. 针棒部份(Needle Bar Part):



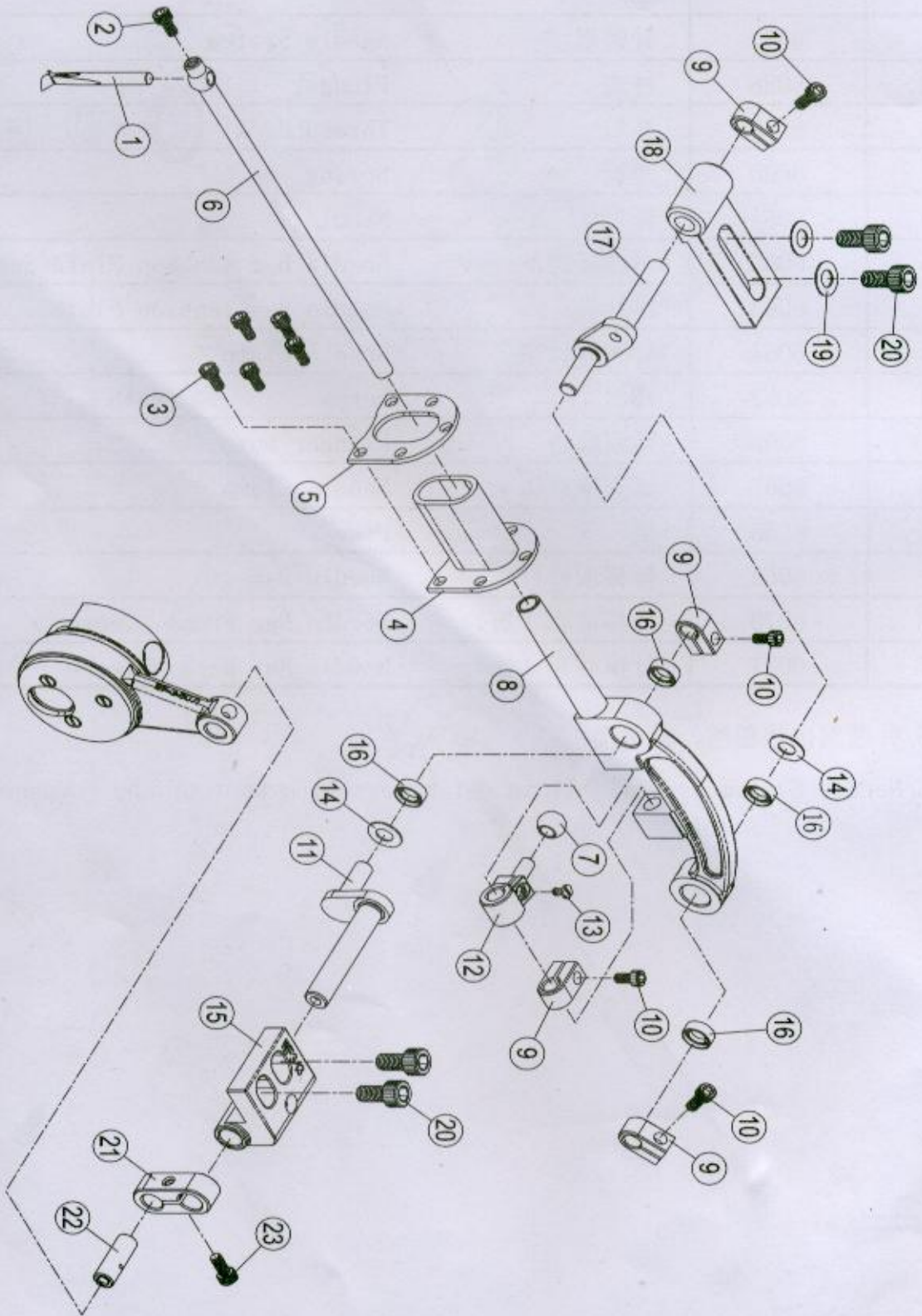
C针棒部份 (Needle Bar Part):

Ref. No	Parts No.	Description	WF-600
1	6057	针组 Needle System	1
2	6058	柱塞 Plunger	1
3	6059	线勾 Thread Hook	1
4	6060	弹簧 Spring	1
5	6061	针 Needle	1
6	6062	过线板螺丝 Needle Bar Tension Plate Screw	1
7	6063	过线板 Needle Bar Tension Plate	1
8	6064	针夹或针钳 Needle Clamp	1
9	6065	螺丝 Screw M5*8	1
10	6066	活塞螺母 Plunger Nut	1
11	6067	针夹或针钳 Needle Clamp	1
12	6068	销 Pin	1
13	6069	针棒或针杆 Needle Bar	1
14	6070	针棒前套 (短) Needle Bar Front Sleeve	1
15	6071	针棒后套 (长) Needle Bar Back Sleeve	1

P. S. 针组出售整组，无单卖

P. S. Needle System is sell all, is not have sell a part of the component

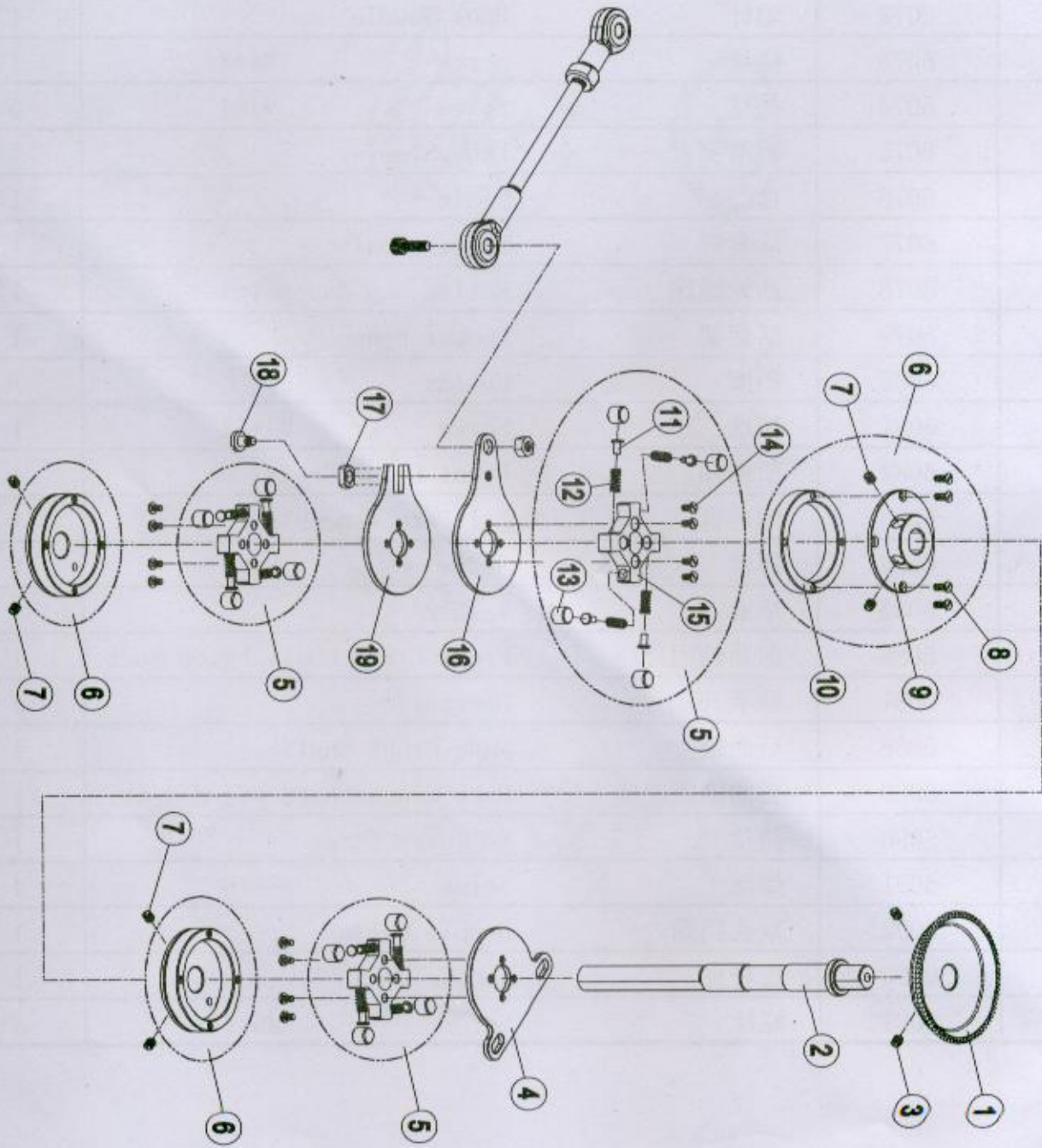
D. 勾针部份(Nooked Needle Part):



D勾针部份 (Nooked Needle Part):

Ref. No	Parts No.	Description	WF-600
1	6072	勾针 Hook Needle	1
2	6073	螺丝 Screw M4*8	1
3	6074	螺丝 Screw M3*6	5
4	6075	润滑套 Lube Sleeve	1
5	6076	盘 Plate	1
6	6077	活套杆 Looper Shaft	1
7	6078	凸轮滚珠 Roller Cam Assembly	1
8	6079	活套架 Looper Frame	1
9	6080	挡圈 Collar	1
10	6081	螺丝 Screw M4*12	1
11	6082	前曲轴 Front Crank Shaft	1
12	6083	球形臂 Ball Arm Assembly	1
13	6084	螺丝 Screw M4*8	1
14	6085	垫圈 Washer	1
15	6086	前曲轴固定座 Front Crank Shaft Fixed Seat	1
16	6087	轴承 Bearing	2
17	6088	后曲轴 Back Crank Shaft	1
18	6089	后曲轴固定座 Back Crank Shaft Fixed Seat	1
19	6090	垫片 Follower Sheet	1
20	6091	螺丝 Screw M8*16	4
21	6092	双孔挡圈 Double Collar	1
22	6093	连杆肖 Couple Shaft	1
23	6094	螺丝 Screw M5*1	3

E. 送料部份(Feeding Part)1/2:



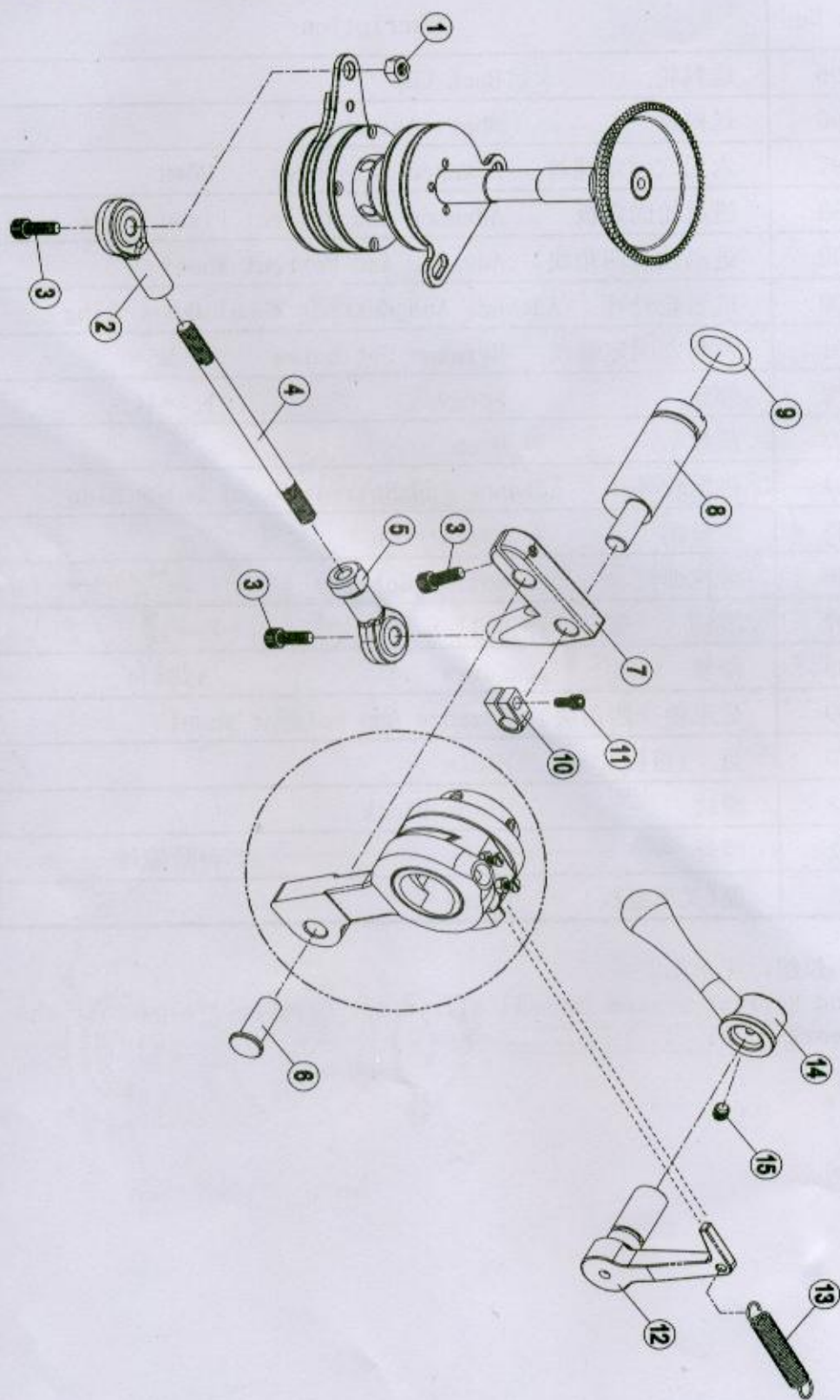
E送料部份 (Feeding Part) 1/2:

Ref. No	Parts No.	Description	WF-600
1	6095	送料轮 Back Cup	1
2	6096	送料轴 Shaft Assembly	1
3	6097	六角穴因定螺丝 Hexagon Set Screw M6*8	2
4	6098	进退轮固定板 Advance And Retreat Fixed Plate	1
5	6099	进退轮 (四角块) Advance And Retreat Wheel	1
6	6100	进退轮外环 Advance And Retreat Wheel Outer Ring	1
7	6101	六角穴因定螺丝 Hexagon Set Screw M6*6	6
8	6102	螺丝 Screw 1/8*44	24
9	6103	鼓盘 Drum	1
10	6104	进退轮外环 Advance And Retreat Wheel Outer Ring	1
11	6105	滚轮销 Roller Pin	1
12	6106	滚柱弹簧 Roller Spring	1
13	6107	滚柱 Roller	1
14	6108	螺丝 Screw 1/8*44	1
15	6109	进退轮 (四角块) Advance And Retreat Wheel	1
16	6110	盘 (盖板) Plate	1
17	6111	滑块 Slide Block	1
18	6112	螺丝 Screw M5台阶螺丝	1
19	6113	盘 (叉形盖板) Plate	1

P. S. 进退组出售整组, 无单卖。

P. S. Advance and Retreat system is sell all, is not have sell a part of the component

### E. 送料部份 (Feeding Part) 2/2:

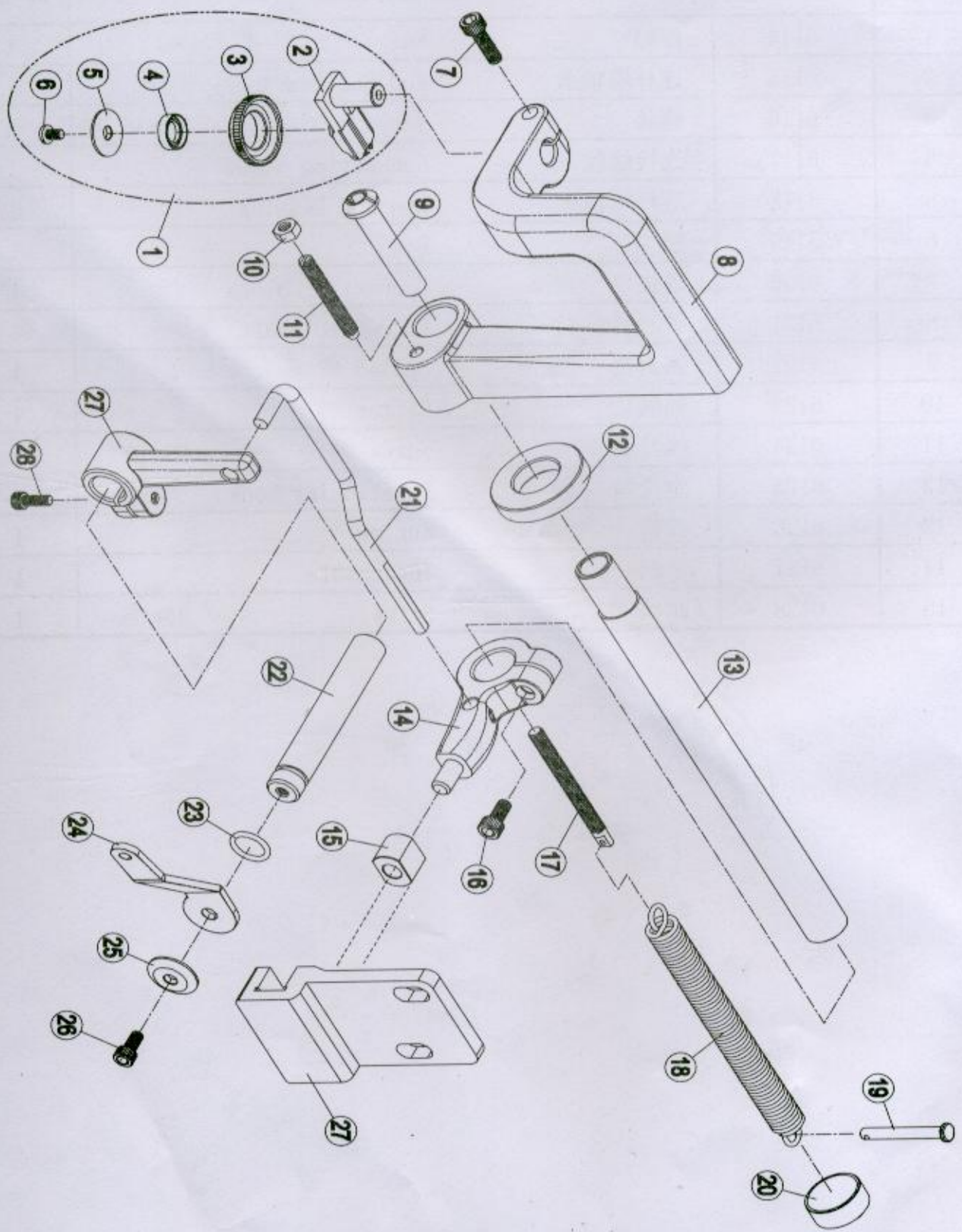


## E送料部份 (Feeding Part) 2/2:

Ref.No	Parts No.	Description	WF-600
1	6114	螺帽 Nut M6	1
2	6115	连杆端轴承 Rod End Bearing	1
3	6116	螺丝 Screw M6*16	3
4	6117	连接螺丝 Connecting Screw	1
5	6118	连杆端轴承 Rod End Bearing	1
6	6119	销 Pin	1
7	6120	连接块 Connection Block	1
8	6121	偏心轴 Eccentric Shaft	1
9	6122	密封圈 Sealed	1
10	6123	挡圈 Collar	1
11	6124	螺丝 Screw M5*10	1
12	6125	定位勾 Positioning hook	1
13	6126	弹簧 Spring	1
14	6127	手柄 The handle	1
15	6128	螺丝 Screw M5*10	1



F. 压前轮部份(Pressing Front Wheel Part):



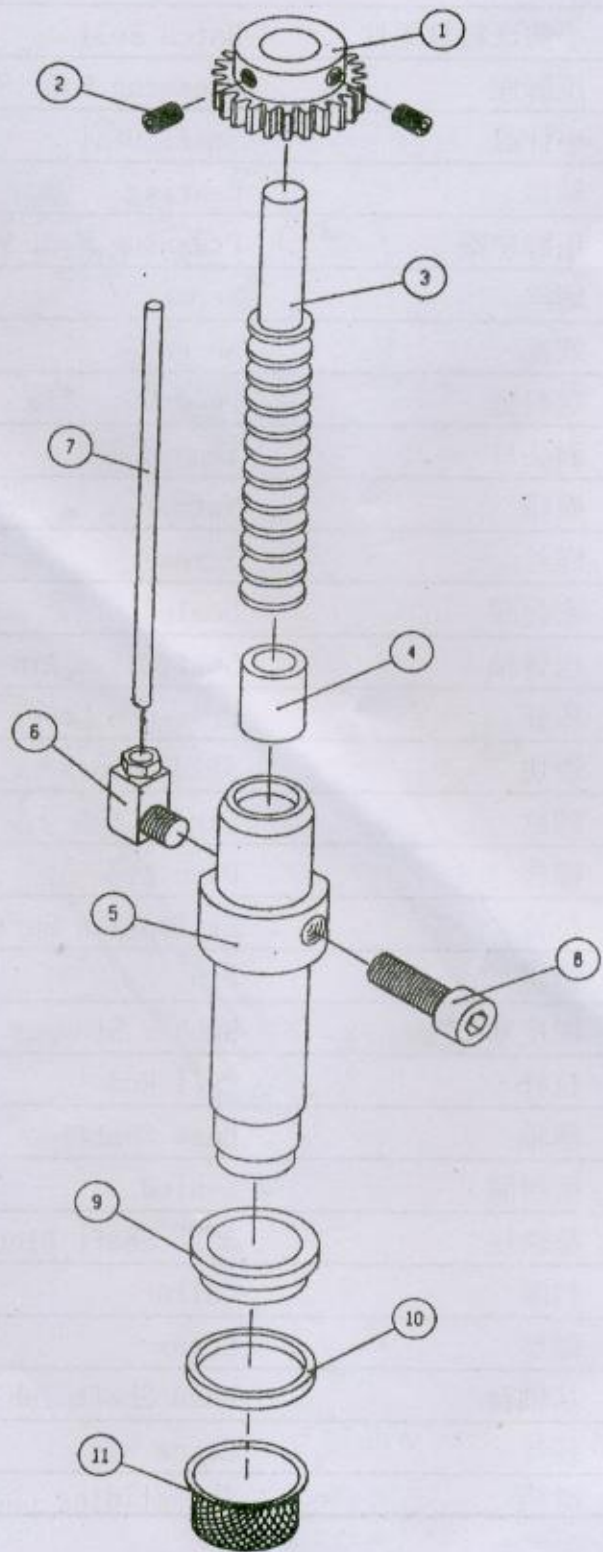
F压前轮部份 (Pressing Front Wheel Part):

Ref.No	Parts No.	Description	WF-600
1	6129	小前送料盘组件 Batch Sell	1
2	6130	压脚座 Pressing Foot Seat	1
3	6131	小针盘 Small Dial	1
4	6132	轴承 Bearing	1
5	6133	压脚垫圈 Pressing Foot Wash	1
6	6134	螺丝 Screw 1/8	1
7	6135	螺丝 Screw M6*15	1
8	6136	送料臂 Feed Disc Arm	1
9	6137	斜头杆 Tapped Rod	1
10	6138	螺帽 Nut M6	1
11	6139	螺丝 Screw M6*40	1
12	6140	密封圈 Sealed	1
13	6141	送臂轴 Shaft Disc Arm	1
14	6142	压杆 Pressure Lever	1
15	6143	滑块 Slide Block	1
16	6144	螺丝 Screw M6*15	1
17	6145	螺栓 Disc Arm	1
18	6146	拉簧 Ex Tension Spring	1
19	6147	销 Pin	1
20	6148	橡皮塞 Rubber Stopper	1
21	6149	拉杆 Pull Rod	1
22	6150	基轴 Base Shaft	1
23	6151	密封圈 Sealed	1
24	6152	基轴块 Base Shaft Block	1
25	6153	挡圈 Collar	1
26	6154	螺丝 Screw M5*8	1
27	6155	基轴台 Base Shaft Table	1
28	6156	螺丝 Screw M8*16	1
29	6156	滑槽 The sliding channel	1

P. S. 压脚组出售整组, 无单卖

P. S. Pressing Foot System is sell all, is not have sell a part of the component

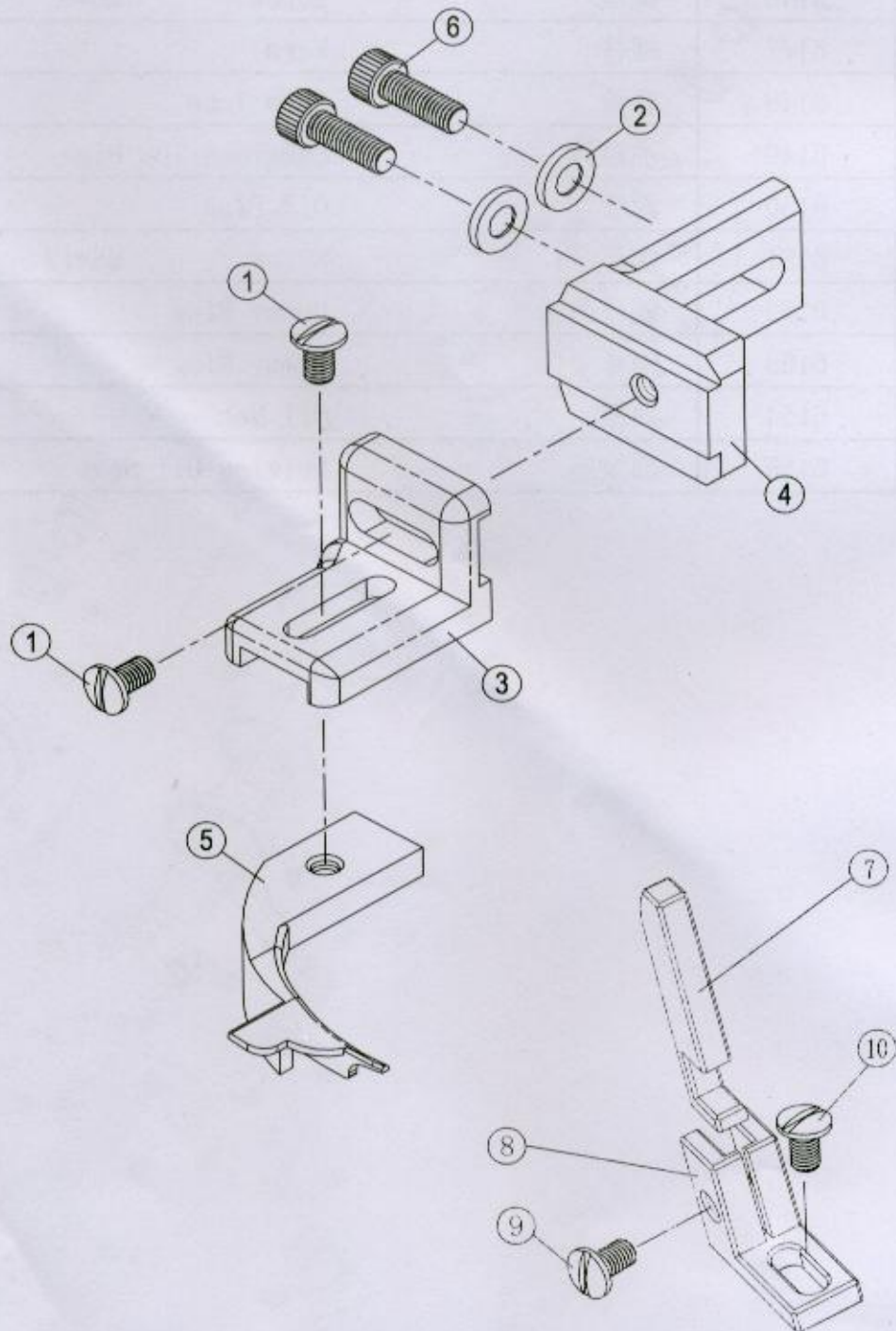
G. 打油部份(Driving Oil Part):



G. 打油部份 (Driving Oil Part):

Ref.No	Parts No.	Description	WF-600
1	6145	齿轮 Gear	1
2	6146	螺丝 Screw M6*8	2
3	6147	螺杆 Worm	1
4	6148	套管 Core Tube	1
5	6149	油泵体 Lubrication Pipe	1
6	6150	油管 Oil Pipe	1
7	6151	螺丝 Screw M8*12	1
8	6152	隔环凸缘 Dummy Ring	1
9	6153	隔环 Dummy Ring	1
10	6154	油网 Oil Net	1
11	6155	油泵座 Driving Oil Seat	1

## H. 配件部份 (Attachment Part):



H. 配件部份 (Attachment Part):

Ref.No	Parts No.	Description	WF-600
1	6135	螺丝 Screw 15/16*31	2
2	6136	垫片 Follower Sheet	2
3	6137	导向连接块 Guide Connector	1
4	6138	保护连接块 Guard Connector	1
5	6139	导向块 Tapped Hole	1
6	6140	螺丝 Screw M5*10	2
7	6141	松线块 Loose Thread Block	1
8	6142	松线座 Loose Thread Seat	1
9	6143	螺丝 Screw M5*12	1
10	6144	螺丝 Screw M4*10	1

I. 附件部份(Accessories Part):

